



**Have Coffee with an Expert
in Booth # 4847**

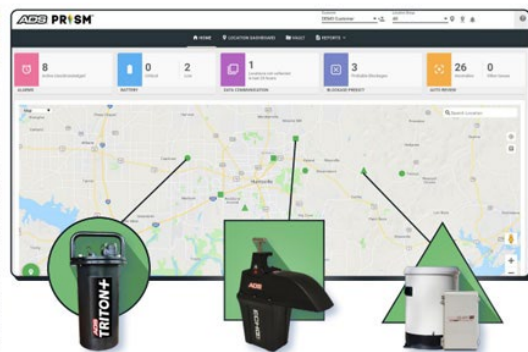
October 10-12, 2022 | New Orleans, LA

Learn How Comprehensive Monitoring Solutions from ADS are Creating the Future Today!

ADS® is on a mission to provide the most trusted and advanced solutions to complex collection system problems. We are constantly working with our customers to make the process of managing collection systems easier, more affordable, automated, intuitive, and efficient. We are inviting you to join us at WEFTEC and receive personal, expert attention to discuss your application challenges.

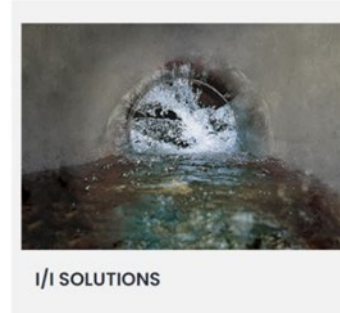
Discover How End-to-End, Turn-Key Services Create Better Outcomes

ADS takes a comprehensive, turn-key approach for supporting flow, level, and rainfall monitoring projects. It all starts with a team of experts, focused on the essential tasks of project planning, field installations, monitoring network maintenance, data analysis, and summary findings. Our team takes complete responsibility for the meters, sensors, and software from the start of the project to the end result of delivering valuable data and insights to you.



Reduced Risk and Improved Decision-Making

ADS reduces customer risk by applying well-honed expertise with our turn-key services to deliver the quality data and insights that you need. What makes ADS unique is that we develop our own equipment, including meters and sensors, and our own software with predictive analytics, to deliver our expert services. With this, you can make informed decisions and reduce risk for operational or capital improvement projects.



Creating the Future Today

Our high-performing service teams create a comprehensive North American network of project support at a local level. These teams include expert program managers, field technicians, and data analysts all of which deliver consistent, quality data and insights.

Every project is a new opportunity to apply our 47-plus years of experience meeting our customers' most difficult technical and financial challenges. This ongoing process creates new opportunities to optimize processes, bringing future solutions to today's needs.

The ADS Difference

Ongoing investment in advanced software solutions and smart metering networks have, and continue to, establish ADS' leadership. This gives you assurance that you have the best partner for successfully encountering ever-changing technical and financial challenges.



Take Advantage of the WEFTEC Opportunity

We value our close relationships with our customers and industry partners to create best-fit solutions for RDII, capacity planning, model calibration, SSO prevention and more. It can start with taking a few moments to meet with us and sit and relax with a cup of coffee with one of our experts.

Join Us at WEFTEC Booth #4847 to have a cup of coffee and chat with an ADS expert.

[Click here to schedule an appointment.](#)