

**IMPORTANT - Read entire document and watch all associated videos before installing the ECHO!**

**ADS**

**ECHO**<sup>TM</sup>



## START-UP GUIDE

**Make sure you have all the supplies and read all the materials before you begin. Early steps must be completed BEFORE you attempt to install your ADS ECHO in the field.**

### ✓ SUPPLIES CHECKLIST!

These supplies come in the box with the basic ECHO kit. (Different supplies may be included based on the kit you ordered.)



- ECHO monitor**  
(Sim Card Pre-installed)



- Hex key (P/N 509063)



- ECHO Quick Installation Guide** (included in box)

Additional supplies to acquire from ADS before setup and installation. Available for purchase on the ADS storefront.



- ADS Blue "set-up/activation/reset" magnet (P/N 8000-0460)



- Mounting bar (P/N 9000-0070), wall mount (P/N 8000-0484), or steel wall mount (P/N 9000-0097-S)



- ADS bluetooth dongle (P/N 9000-0061)



- Antenna  
(with 12ft (3.66m) cable P/N 9000-094)  
(with 3ft (0.91m) cable P/N 9000-096)

**Additional general supplies to acquire before field installation.**

- J-hook
- Grade pole
- Carpenter's rule or tape measure
- Rubber splicing tape

### ✓ DOWNLOADABLE MATERIALS

Download Software from [www.adsenv.com/software-downloads](http://www.adsenv.com/software-downloads)

- Download ADS **Qstart<sup>XML</sup>** software
- Download bluetooth driver

**Documentation Required for Installation**

- "ECHO Start-up Guide"** to share this document with co-workers.
- "ECHO Quick Installation Guide"** to refer to while completing the ECHO field installation.
- "ADS ECHO Qstart<sup>XML</sup> Quick Reference Guide"** to configure and activate the ECHO with **Qstart<sup>XML</sup>**.
- (optional) "ADS ECHO Installation, Operation, and Maintenance Manual"** for detailed information regarding installation, Intrinsically Safe (IS) certifications and maintenance restrictions.



### All digital ECHO Materials on One Convenient webpage

Visit [www.adsenv.com/ECHO](http://www.adsenv.com/ECHO) for quick access to all things ECHO in one place. The ECHO webpage houses all ECHO specific literature, documents, guides, FAQs, and videos.

**Now Proceed to the Steps on page 2 →**

**IMPORTANT - Read entire document and watch all associated videos before installing the ECHO!**

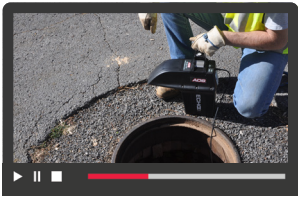
## Read Steps 1-6 for Correct Setup, Installation, and Verification

### 1. INITIAL SETUP

**IMPORTANT!** Complete A-C before proceeding with Configuration and Activation.

- A. Activate the pre-installed ADS SIM card. The **ECHO** relies on cellular communication to operate, so activate the SIM card first. Follow the directions in the Initial Set Up section of the **ECHO/QstartXML Quick Reference Guide**.
- B. Download the ADS **QstartXML** software, **ECHO/QstartXML** Installation Guide, and the Bluetooth driver from the software downloads page.
- C. Install ADS **QstartXML** software and Bluetooth driver onto the field computer. **QstartXML** must be installed prior to proceeding with steps 2-6. The recommended approach for activating the **ECHO** is using the Bluetooth dongle. Steps for installing the Bluetooth driver and **QstartXML** software are in the Initial Set Up section of the ADS **ECHO/QstartXML Quick Reference Guide**.

### 2. CONFIGURATION AND ACTIVATION



- ▶ Watch the ADS video “**How to Configure and Activate an ADS ECHO with QstartXML**” before beginning Configuration and Activation. It provides detailed steps to correctly configure and activate an **ECHO** monitor.
- 📖 Read the **ECHO/QstartXML** Quick Reference Guide section about Configuration and Activation. It details how to Create and Configure the Monitor Location and Activate the Monitor in **QstartXML**.

### 3. ECHO MONITOR INSTALLATION



- ▶ Watch the ADS video “**How to Install the ADS ECHO Level Monitor**.” It walks you through the equipment needed and the process to install the **ECHO** in the field.
- 📖 Read the **ECHO** Quick Installation Guide. It is packaged with each **ECHO** monitor. Ensure you have this on-site during field installation to provide easy step-by-step instructions.

✓ **CHECKLIST! Parts and tools required on-site for installation:**

- |                                       |   |   |
|---------------------------------------|---|---|
| <input type="checkbox"/> ECHO monitor | <input type="checkbox"/> Mounting bar or wall mount | <input type="checkbox"/> Carpenter's rule                                       |
| <input type="checkbox"/> Blue magnet  | <input type="checkbox"/> J-hook                     | <input type="checkbox"/> Grade pole   |
| <input type="checkbox"/> Antenna      | <input type="checkbox"/> Rubber splicing tape       | <input type="checkbox"/> <b>ECHO</b> Quick Installation Guide (included in box) |

### 4. ANTENNA INSTALLATION



- 📖 Refer to the **ECHO Quick Installation Guide** for in-manhole installation.
- ▶ Watch the ADS video “**How to install an antenna for use with ADS Monitors**” for a walkthrough of outside the manhole antenna installation.
- 📖 For in-depth installation instructions, refer to the **ADS ECHO Installation, Operation, and Maintenance Manual, Chapter 3**.

### 5. FINAL CONFIGURATION

**You are almost there!** – Once the **ECHO** is installed in manhole, there are a few Final Configuration steps to complete the installation. Follow the steps outlined in the Final Configuration and Verification section of the **ADS ECHO/QstartXML Quick Reference Guide**.

### 6. VERIFICATION AND STATUS CHECK

It is recommended that wireless communication be verified upon installation of the monitor. Once the **ECHO** is confirmed to be properly communicating with your network, you can start using **ECHO** in remote monitoring.



**For Further Assistance**  
Email [adssupportcenter@idexcorp.com](mailto:adssupportcenter@idexcorp.com)  
Call 1-877-237-9585

**ADS**  
www.adsenv.com/echo