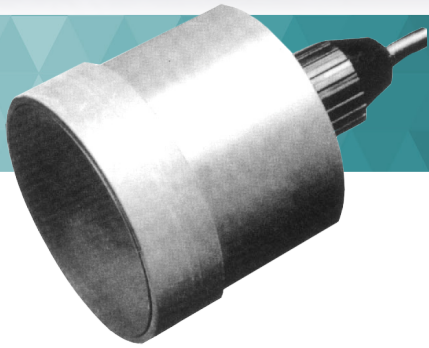


ACCUSONIC®



Model 7612 Transducer

Model 7612 Open Channel Transducer Assembly

The Model 7612 transducer assembly is designed for use in open channel and river applications. The 7612 is constructed of all PVC to provide excellent resistance to chemicals and corrosives. Each 7612 transducer assembly includes 200 feet (60 m) of HDPE-jacketed cable rated for continuous submersion. The transducer mounting assembly and arrangements can be designed to meet site-specific requirements.

About ACCUSONIC

ACCUSONIC®, a brand of ADS® LLC, designs and manufactures multi-path transit-time flow measurement systems, which are renowned for their precise accuracy and reliability in difficult operating environments.

ACCUSONIC flowmeters can be found in hydroelectric and thermal power plants, water and wastewater treatment facilities, sewage collection systems, and other types of water conveyance pipelines and channels.

Since 1967, ACCUSONIC has installed thousands of systems worldwide, and offers a full range of services including installation and startup, system verification, turbine performance testing services, and field training.



7612 Transducer

Unique Features

Flexibility: Can be installed in a vertical array and pre-mounted on slides or pipes, allowing for ease of maintenance

Accuracy: Provides the highest level of accuracy & repeatability, even in the harshest conditions & environments

Economy: All ACCUSONIC flowmeter controllers & transducers are backwards compatible, reducing upgrade costs and saving time

ACCUSONIC®

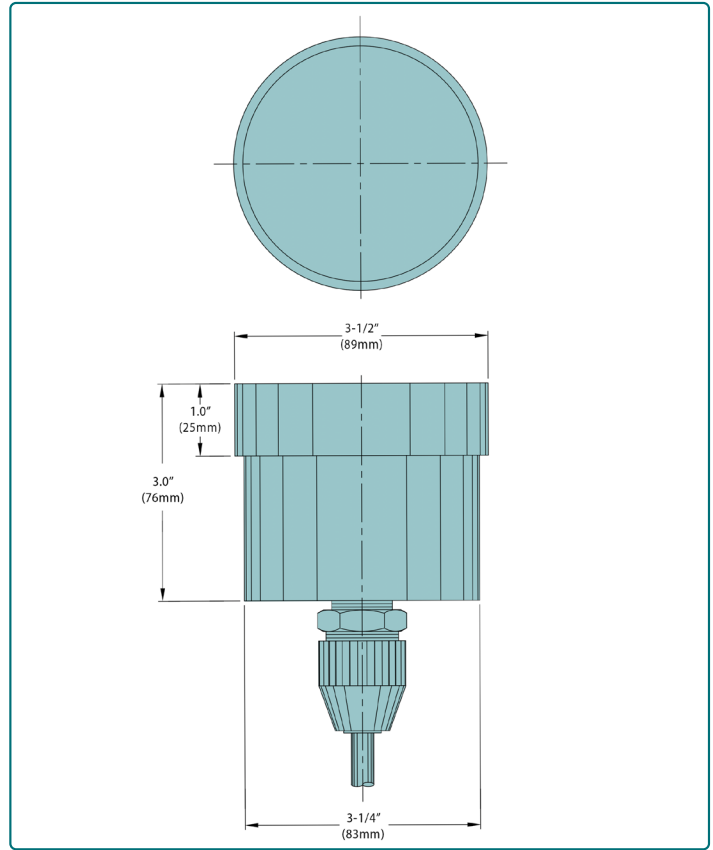
Model 7612 Transducer

DESIGN SPECIFICATIONS

Operational Frequency	200 kHz
Path Length Range	10 ft. to 500 ft.* (3 m to 150 m) *For paths larger, please contact ACCUSONIC
Maximum Operating Pressure	100 psi (7.0 bar)
Temperature Limits	- 22° to 140° F (-30° to 60° C)
Construction Material	PVC

DIMENSIONAL DATA

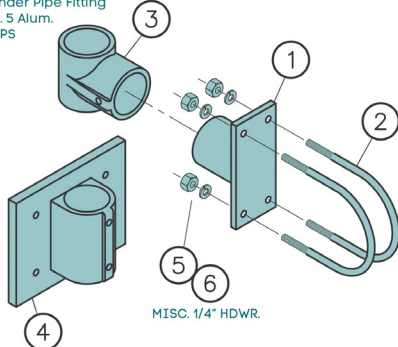
Transducer Diameter	3.5/3.25 in. (89/83 mm)
Transducer Length	3 in. (76 mm)
Integral Cable Length	200 ft.* (61 m) *For longer cable lengths, please contact ACCUSONIC



Model 7612 Transducer

7612 MOUNT KIT (7612-0030-XX)

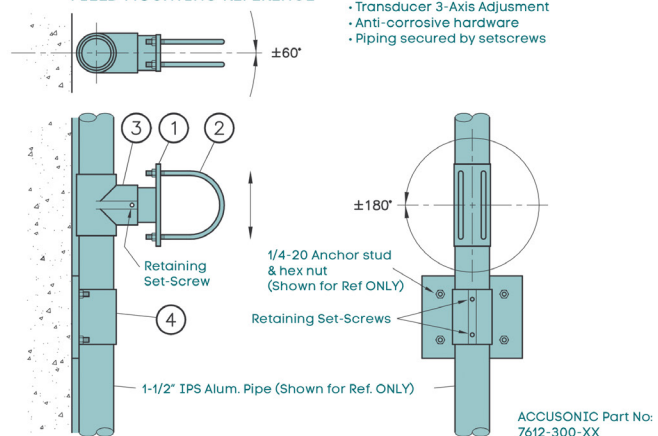
ACCUSONIC P/N 506748
Hollaender Pipe Fitting Tee No. 5 Alum.
1-1/2" IPS



MISC. 1/4" HWWR.

ACCUSONIC P/N 506748
Hollaender Pipe Fitting Flange No. 52 Alum.
1-1/2" IPS
Located Immediately Below Each Transducer

FIELD MOUNTING REFERENCE



- Transducer 3-Axis Adjustment
- Anti-corrosive hardware
- Piping secured by setscrews

7612 Mounting Kit

Contact ACCUSONIC for more information
and solutions for your flow metering applications.

Learn more about ACCUSONIC at www.ACCUSONIC.com
Call: +1(256)430-3366 Email: accusonicsales@idexcorp.com

ACCUSONIC®
is a brand of **ABS**