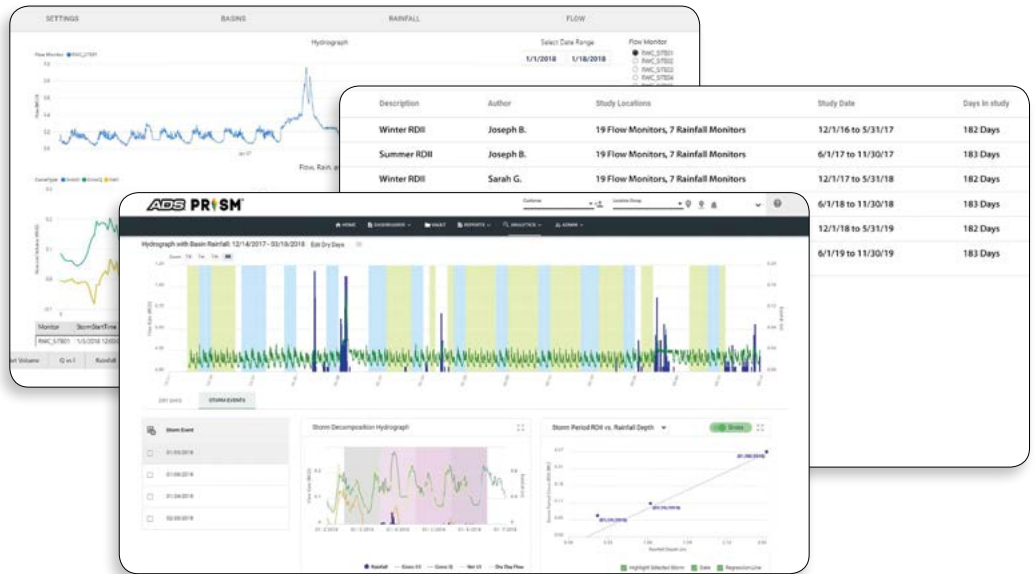


SLiCER™



The Future of I/I Analytics

SLiCER™ is the Newest ADS I/I Analytics App

The new **SLiCER** in **PRISM™** puts the power and control of your Infiltration and Inflow (I/I) studies directly in your hands, providing the industry's most trusted and complete I/I evaluation solution. **SLiCER** makes it easy to evaluate your entire collection system as a single solution, tracking down I/I to guide rehabilitation programs, eliminate overflows, and validate results. The **SLiCER** app, as a valuable addition to the ADS **PRISM** platform, leverages the power of seamless data integration, trusted analytics, and flexible reporting in a single, unified platform.

Use SLiCER to See, Understand, and Act

Make ADS your wet weather expert and partner for I/I removal projects with SLiCER. Collect accurate data for technical assignments that require rigorous and defensible analysis. SLiCER provides you the answers to difficult questions regarding your wastewater collection system performance.



SLiCER Users

Municipal Engineers

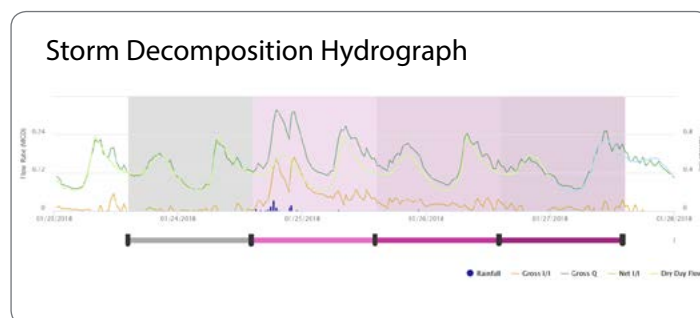
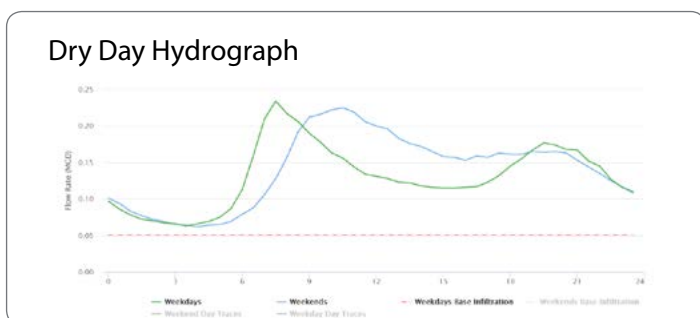
Answer wet weather questions and track sewer performance with SLiCER. Get the answers you need quickly and get back to the rest of your work day.

- Answer sewer performance storm-by-storm
- Understand rainfall return frequencies
- Get results quickly

Consulting Engineers


SLiCER's powerful analytics keep you focused on engineering tasks with automated, industry-accepted methods that provide a rigorous and defensible analysis.

- Vary assumptions, visualize results, and apply engineering judgment
- Take your results with you, and leverage them in reports, presentations, and hydraulic models




Use SLiCER to gain actionable insight for:

- Rainfall Analysis
- RDII Calculations
- Rainfall Depth-Duration-Frequency (DDF)
- Storm-by-Storm RDII
- System-wide RDII
- Q vs. i Relationships
- Seasons and Regimes - *Coming 2020*
- RTK and More - *Coming 2020*

 **Learn About PRISM:**
www.adsenv.com/prism

 **Learn About SLiCER**
www.adsenv.com/sliicer

 **Call:** 800.633.7246
Email: adssales@idexcorp.com