



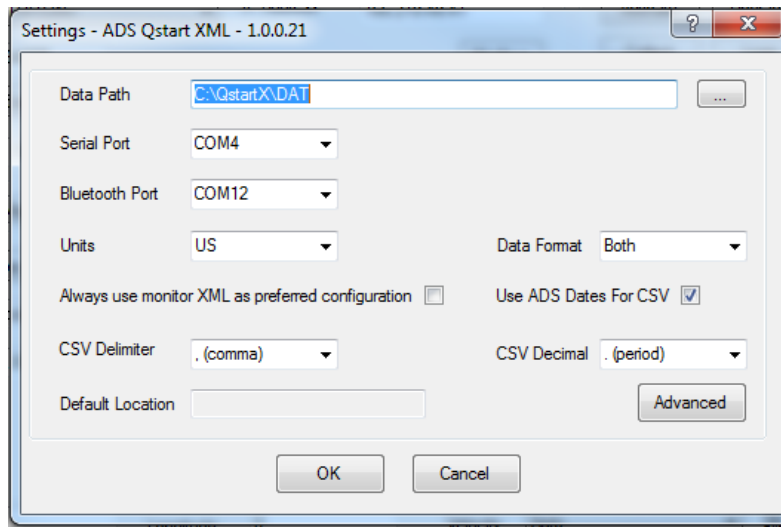
QUICK REFERENCE GUIDE

ADS® Qstart™XML Installation, Setup, and Collection

QstartXML is a simple, user-friendly software utility that allows you to quickly setup and activate ADS **ECHO™**, ADS **RainAlert® III™** and ADS **TRITON+®** monitors. **QstartXML** also enables you to collect and review monitor data in hydrograph and tabular views simultaneously. An end-of-day **Archive** feature “zips-up” the modified data files and stores them in folders for easy import into other software packages. See below for the quick and easy steps to getting your ADS monitors up and running.

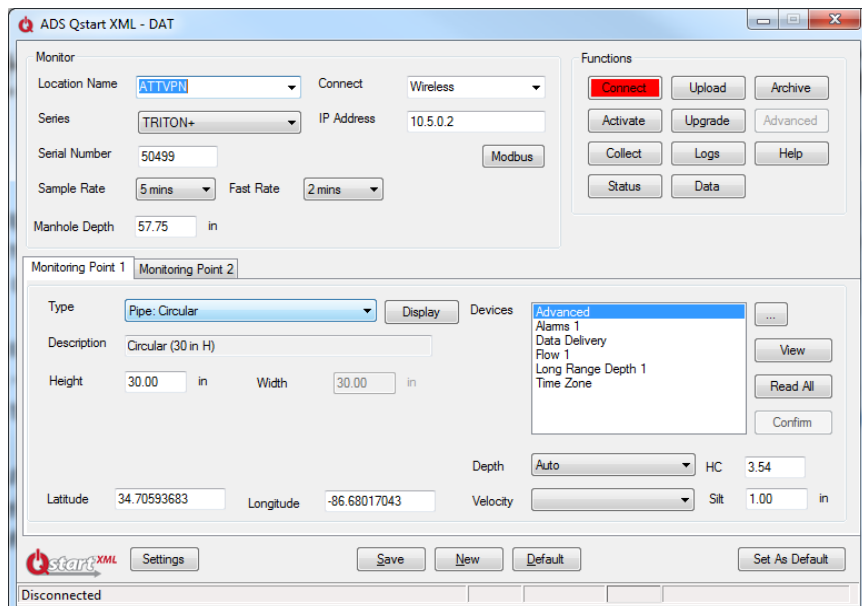
QstartXML Software Installation:

QstartXML is available from the ADS website at www.adsenv.com/software-downloads. Follow the instructions in the **QstartXML** Installation Guide to download and install **QstartXML**. Once installed, double-click on the **QstartXML** icon on your desktop screen to launch **QstartXML**. Upon initial launch, a **Settings** screen will display:



Enter or browse to the desired **Data Path** for your site folders (this must be a different Data Path from that used for the original **Qstart™** software, if you still have it installed), and then select the correct communication ports for your computer, the desired units of measure for your data, and the Data Format for the collected data. Then, click on **OK**. You are now ready to set up and activate your ADS monitor.

QstartXML Main Screen:



Qstart^{XML} Initial Setup:

ADS recommends setting up a default location configuration file that you can use as a template for all subsequent monitor locations. Enter a logical name for the default location in the **Location Name** field (for example, enter "Default_Loc").

1. Select the monitor **Series** for the default location.
2. Select the communication method from the *Connect* drop down list.
3. Enter 0 (zero) for the **Serial Number**.
4. Select the desired default **Sample Rate**.
5. Verify *Circular* is the correct pipe **Type**.
6. Verify the **Devices** list matches the devices to be used on the current project. Update as necessary from the **Available Devices** by clicking on the button. Select the *Flow 1 or Flow 2* (for Monitoring Point 2) device and

configure appropriately (as noted in Step 7) if you want to include flow rate in the collected **Qstart^{XML}** data.

- Qstart^{XML}** does not calculate flow rate; therefore, the monitor must be configured to log this entity.
7. Update each device with the appropriate parameters by selecting the device and clicking on the button.
 8. Once setup is complete, select and then to create the new *default* location with your project-specific default parameters.

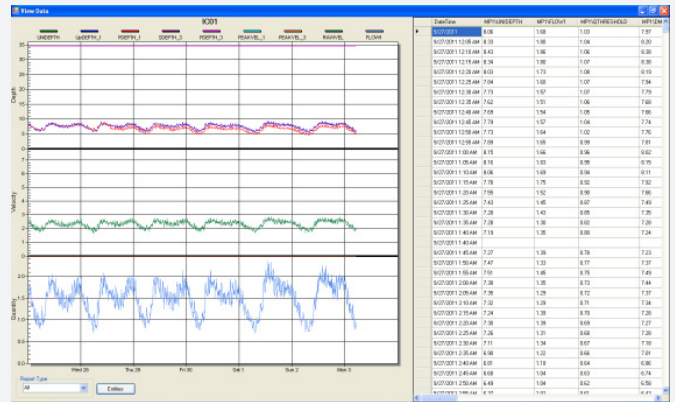
Qstart^{XML} New Location Setup and Activation:

1. Click on .
2. Update **Location Name** with desired name for location you are configuring.
3. Enter the **Serial Number** of the monitor to be installed.
4. Enter the **Manhole Depth** as necessary.
5. Update the pipe **Height** and **Width** as necessary.

6. Update the device parameters as necessary by selecting the button.
7. Once the parameters are updated, click on and then . **Qstart^{XML}** will call and activate the monitor.
8. Click on when activation is complete.

Qstart^{XML} Data Collection and Data Display:

1. Click on to upload data from the monitor.
2. Verify the specified date range to collect, and click on . **Qstart^{XML}** will collect the data and automatically display the data in both hydrograph and tabular format.
3. Click on when the data collection and review process is complete.
4. To view historical data from a location, click on , verify the date range is correct, and click on .



Qstart^{XML} Diagnostics:

Qstart^{XML} provides three diagnostic functions:

1. Click on to review the operational integrity of the monitor.
2. Click on to obtain instantaneous readings of all configured sensors.

3. Click on and then (once connected) to access the sensor diagnostic capabilities. Highlight the desired **Device** on which you wish to perform diagnostics and then click on to obtain access to the device dialog of the individual sensor for which you want to take diagnostic readings.

Qstart^{XML} Archive:

At the end of the day, when all the data has been collected, click on . **Qstart^{XML}** will archive the data, the updated log files and any changes in the LIF to a zipped file in your location directory folder for retrieval into the software package of your choice. The files will contain .CSV and/or ADS bin files depending on the initial **Settings** configured.

Qstart^{XML} Support:

Online Help is available by clicking on the button on the **Qstart^{XML}** main screen. It provides in-depth descriptions of each **Qstart^{XML}** function and should answer most questions that may arise while using the **Qstart^{XML}** software. Contact adssupportcenter@idexcorp.com if you have additional questions about **Qstart^{XML}**.



Call: 800.633.7246
Email: adssupportcenter@idexcorp.com

