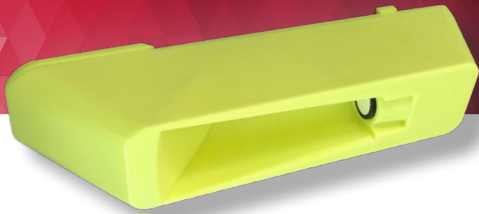


# Trusted Solutions for Non-Contact Flow Monitoring

## ParaDepth™



### NEW *ParaDepth* Sensor from ADS®

You need accurate depth measurement to make timely, critical, and prompt decisions in your community's collection system. With the new ADS® *ParaDepth*™ sensor, wastewater collection system managers, operators, and engineers can collect accurate depth data with a completely non-contact sensor.

Leveraging the power of integrated parabolic reflectors, depth measurement can be achieved with more reliable results than previously available with other non-contact sensor technologies. Quickly and seamlessly integrate the *ParaDepth* sensor into your existing or new ADS flow monitoring network, and benefit from the power of the ADS *PRISM*™ data platform.

*ParaDepth* leverages all the benefits of the ADS sensing and data solution platform, utilizing ultrasonic sensing, parabolic focusing, and new industrial housing and mountings.

### Compatible with the *TRITON+*



### Applications

The *TRITON+* and *ParaDepth* is used to gather data for use in a variety of applications:

- Sanitary Sewer Overflows
- Combined Sewer Overflows
- Inflow and Infiltration analysis
- Hydrologic model validation
- Optimize cleaning process
- Lift/Pump Station Backup
- Scout I&I
- SSO Data & Reporting
- Mitigate SSOs
- Bypass Monitoring



**Non-contact sensing of depth** providing both increased safety for your field team and lower maintenance requirements and costs!



**Lowest lifetime costs of any non-contact sensor on the market** due to the low initial purchase price, low maintenance costs, and the use of the ADS *TRITON+* monitoring platform and the long battery life associated with the *TRITON+*.



**Less maintenance than current non-contact sensing solutions** due to the ruggedization of the sensor transducers, the protection of the sensor faces with the parabolic cavities, and the ability to use both in-pipe and in-manhole mounting solutions!



**No flow disturbance** since the sensor is mounted above the flow rather than in a wetted configuration.



**Reliable performance and data** that you expect from the ADS family of sensing technologies.

# ParaDepth™

## Sensor Specifications



<b>Sensor Dimensions</b>	<b>Height:</b> 2.58 inches (65 mm) <b>Width:</b> 2.28 inches (58 mm) <b>Length:</b> 10.87 inches (276 mm)
<b>Cable Length</b>	30 feet (9.14 m)
<b>Weight</b>	<b>Sensor &amp; Cable:</b> 2.5 pounds (1.13 kg)
<b>Ultrasonic Depth</b>	<b>Operating air range:</b> 0.0 in to 144 in (0.0 cm to 365 cm) <b>Resolution:</b> 0.01 in (0.25 mm) <b>Accuracy:</b> +/- 0.125 in (3.2 mm)
<b>Temperature</b>	<b>Operating range:</b> -4 to 140 degrees F (-20 to 60 degrees C)
<b>Compatibility</b>	The <b>ParaDepth</b> sensor is compatible with the ADS <b>TRITON+</b> ® flow monitor via Channel 1 or 2 sensor ports  <b>Qstart™XML</b> - setup and activation  <b>PRISM™</b> - data analysis

**Certifications** The **ParaDepth** is developed and manufactured under the ISO 9001:2015 Quality Management Standard, and designed to meet the requirements for certifications under:

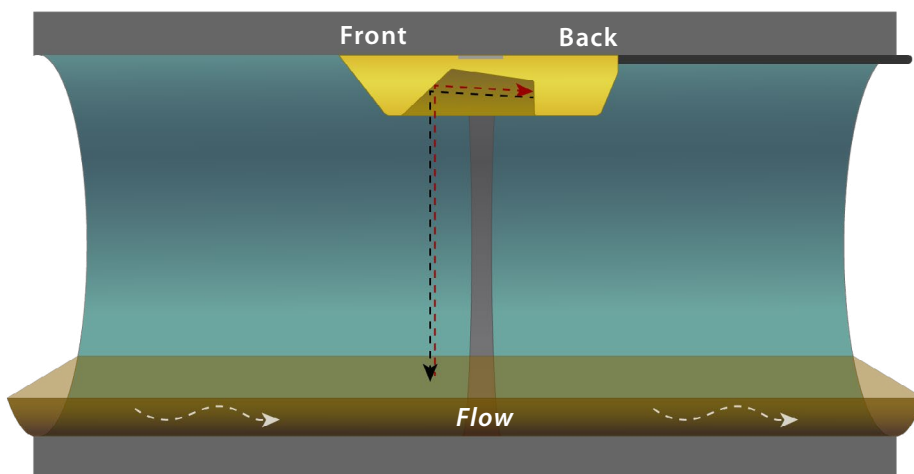
1. ROHS
2. FCC Part 15



Certificate No: 940056



### Quick look at installation of the **ParaDepth**



Learn More About **TRITON+**  
[www.adsenv.com/triton](http://www.adsenv.com/triton)



Call: 800.633.7246  
Email: [adssales@idexcorp.com](mailto:adssales@idexcorp.com)

