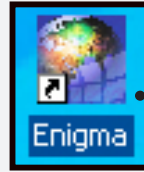


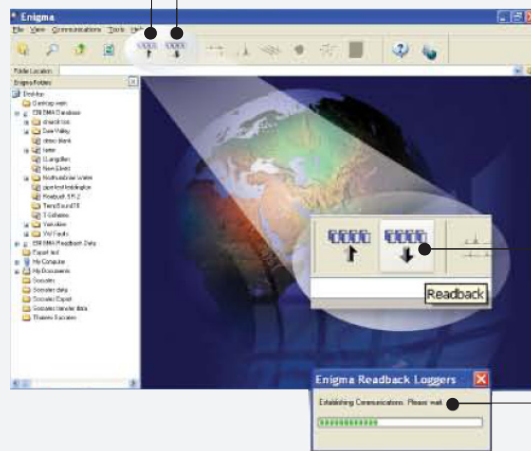


Readback of the ADS Enigma

The ADS Enigma® is a state-of-the-art digital correlation logging system for determining the location of leaks in buried water pipes. Enigma combines noise logging and noise correlation into one operation to provide improved operational efficiency.

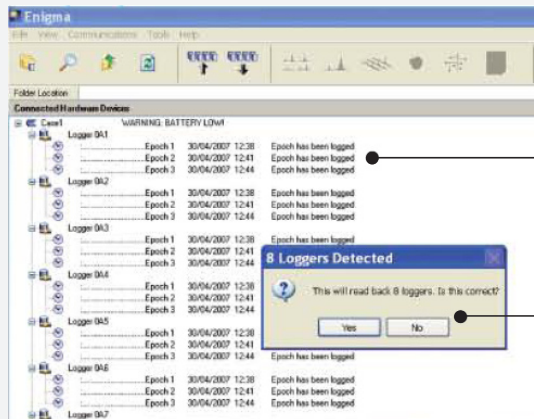


1 From the PC, run the *Enigma* software by clicking on the desktop icon or programs menu.



2 These two buttons are the logger **Programming** and **Readback** buttons.
(The *Enigma* case lid must be closed when programming or reading back loggers via the software.)

3 Ensure the USB communications cable is connected. Click on the **Readback** button which will produce the following progress box.



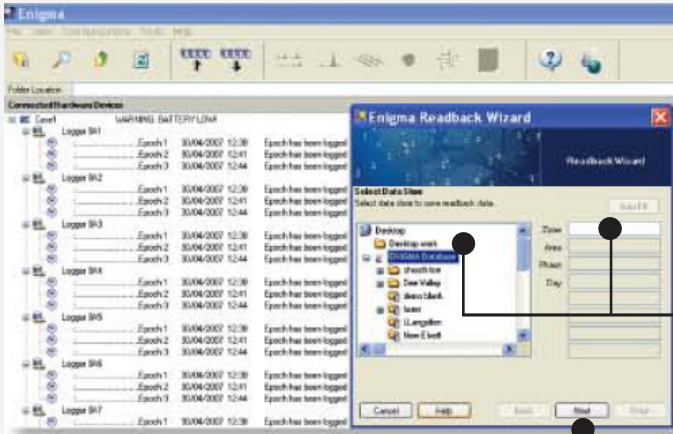
4 The status window indicates how many loggers have been found in the case and asks for confirmation before progressing to the *Enigma* Readback wizard shown overleaf.



ADS Enigma Pod - Installation on Water Meter.

Continued on reverse side.

QUICK REFERENCE GUIDE



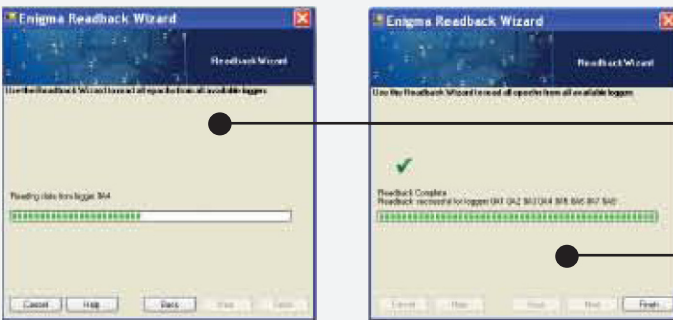
5

The **Readback wizard** indicates the location it is going to store the data in the **ENIGMA Database**. It will ask for a Location name or 'Zone'. This can be a DMA reference number or name, etc.

It is possible to enter Zone – Area – Phase, etc. The minimum entry is the Zone field.

6

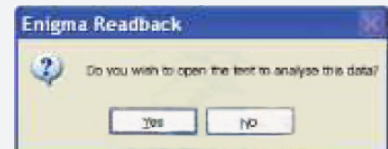
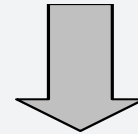
After entering a Zone name, etc. (above), click on the **Next** button.



7

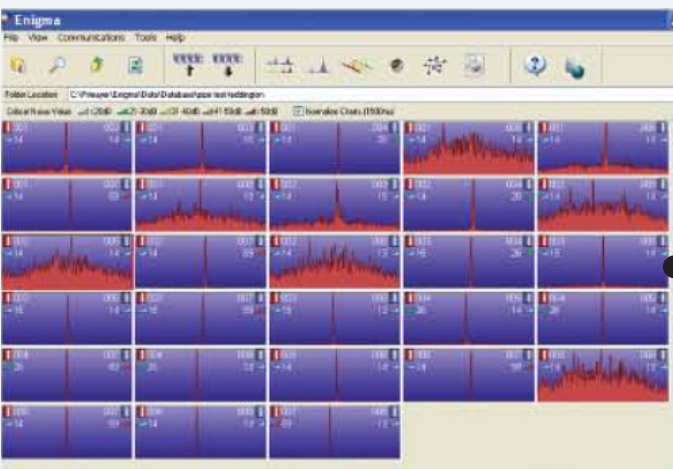
These dialog / progress boxes appear...

Then the dialog box below



8

The leak noise data may now be analyzed.



The ADS Enigma Operating Manual can be Downloaded Online at www.adsenv.com/manuals.

