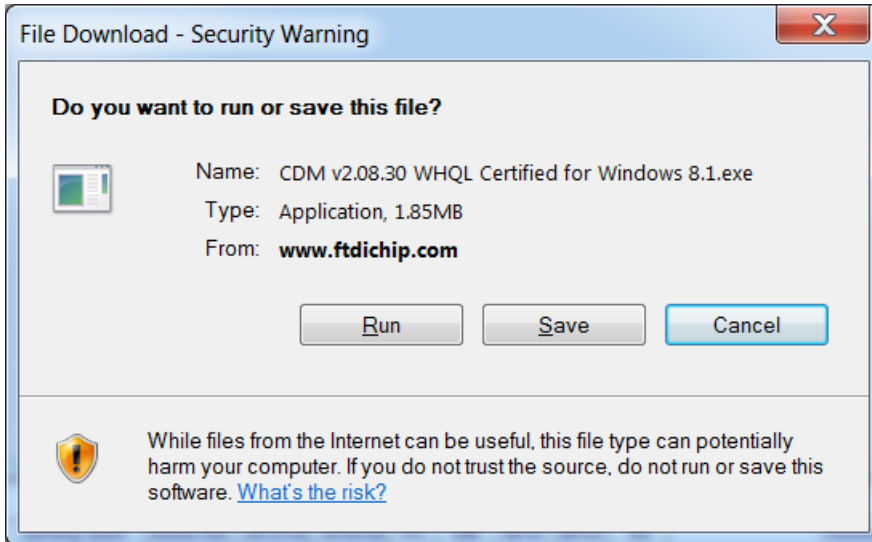


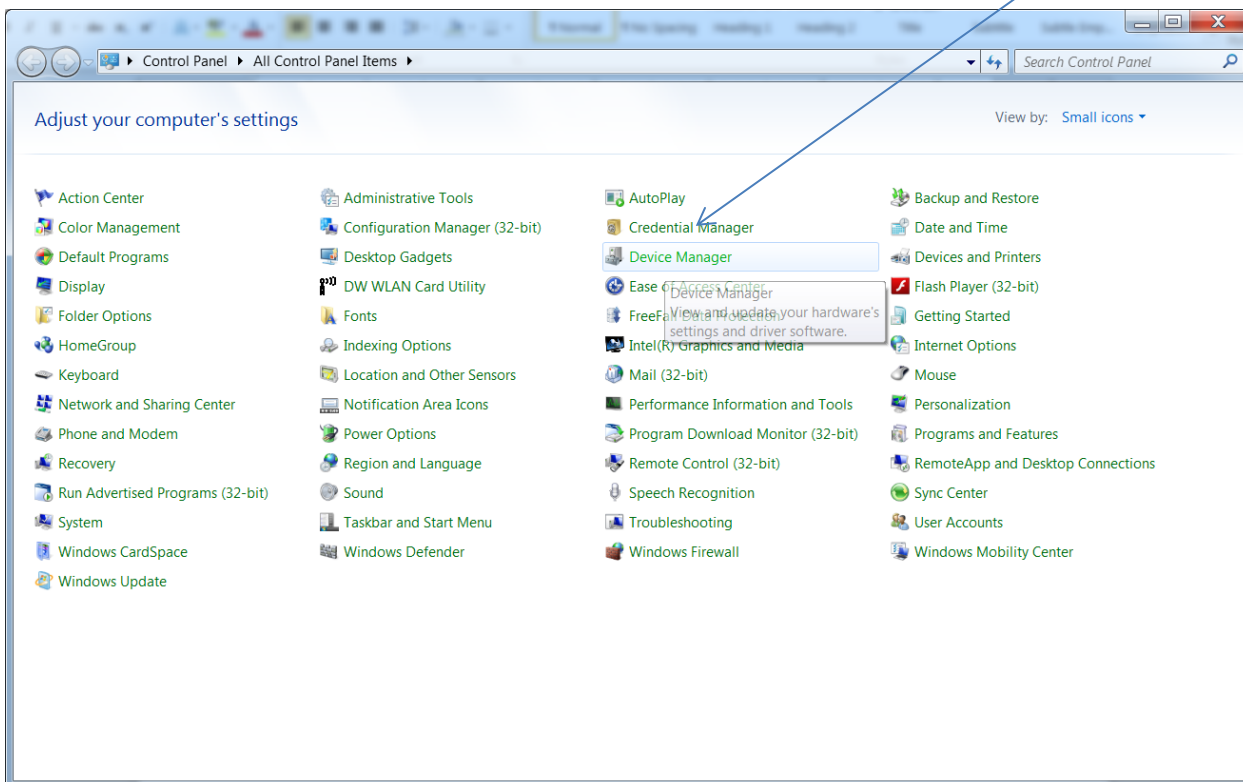
How to Load the Driver for the ADS USB Serial Interface Cable (ADS P/N 8000-0337)

Click on “Download Driver” from the ADS website (www.adsenv.com/softwaredownloads).

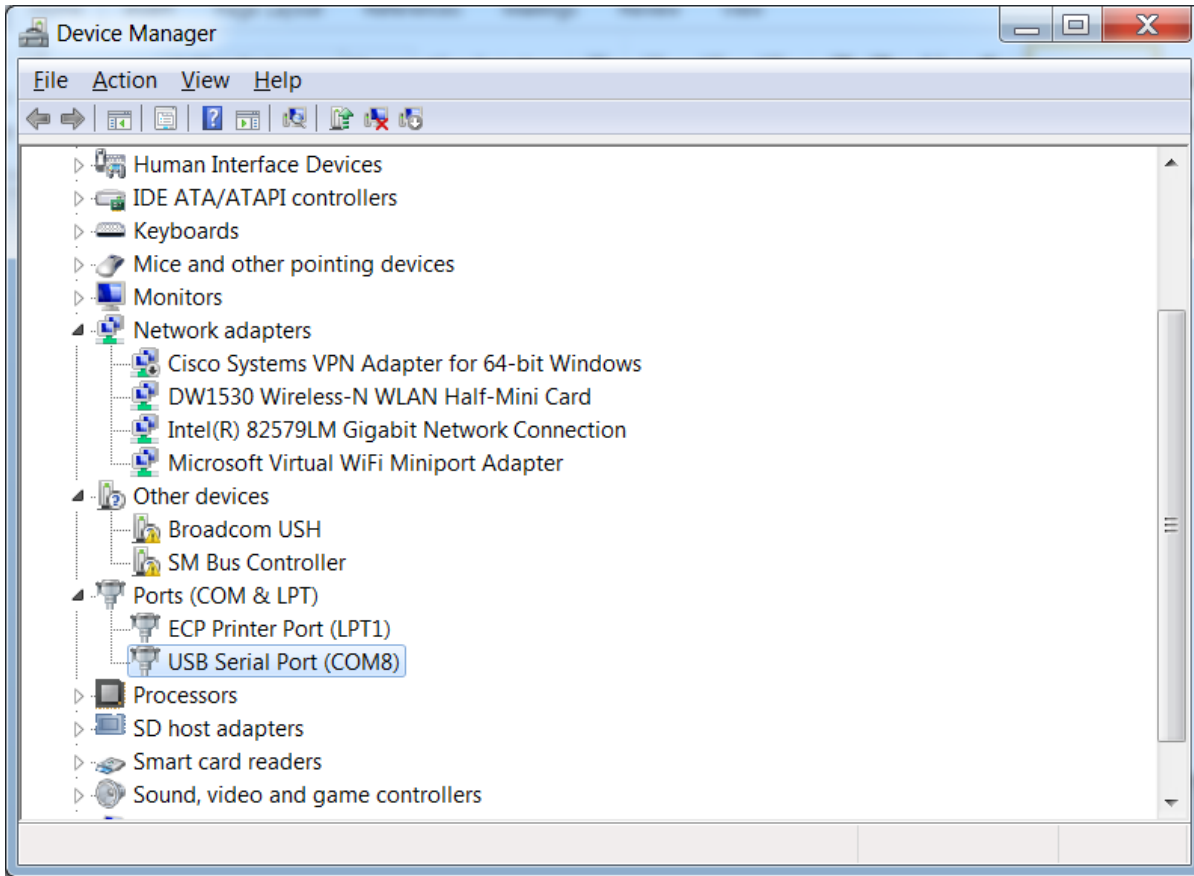
Run or Save the file. (Note: as of February 2015, the file is CDM v2.12.00 WHQL Certified.exe)



Connect the USB cable into your computer and look for the COM port setting under Device Manager.



In this example, the COM port setting is COM8.



In Profile, set your Serial Port to COM8 and communicate with your meter via Connect Using "SERIAL".

