



PRISM 3.0.3 UPDATE



July 14, 2021

Welcome to PRISM 3.0.3!

www.adsprism.com

The new release of PRISM is here! We are calling this **PRISM 3.0.3**. This release is primarily focused on features that address tech debt, but it does also include some exciting new product features.

New features and enhancements include:

- **Store\Restore Curve** – You can now store\restore curves associated to a specific location. These curves are public and you can save up to 5 curves per location. You can see these on the curve options from the scattergraph toolbar.
- **Daily Summary** – The Daily Summary report has been completely revamped. This new report has a completely new format and output. The download will now allow you to export any number of entities from as many of the locations as you wish.

DATE	DEPTH (DU)				VELOCITY (DU)				QUANTITY BY TANK (MILL)				TOTAL	TOTAL	
	MAX	AVERAGE	MIN	STDEV	MAX	AVERAGE	MIN	STDEV	TANK1	TANK2	TANK3	TANK4			
2021/06/02	0.00	0.01	0.00	1.54	0.74	0.00	0.00	0.00	0.00	0.00	0.00	0.00	0.00	-	-
2021/06/03	0.01	0.01	0.00	1.00	0.80	0.00	0.00	0.00	0.00	0.00	0.00	0.00	0.00	-	-
2021/06/04	1.00	0.01	0.00	1.40	0.70	0.00	0.00	0.00	0.00	0.00	0.00	0.00	0.00	-	-
2021/06/05	2.00	0.01	0.00	0.00	0.00	0.00	0.00	0.00	0.00	0.00	0.00	0.00	0.00	-	-

- **Uptime Report** – The Uptime Report has been updated and reimaged - newly organized with advanced report deliverables. The download will now allow you to export any number of entities from as many of the locations as you wish. You now also have a filter that allows you to select locations, entities, or dates.

LOCATION		DEPTH	VELOCITY	QUANTITY	RAIN	DEPTH	VELOCITY	QUANTITY	RAIN	DEPTH	VELOCITY	QUANTITY	RAIN	DEPTH	VELOCITY	QUANTITY	RAIN	
BETHLEHEM	DEPTH	100%	100%	100%	100%	100%	100%	100%	100%	100%	100%	100%	100%	100%	100%	100%	100%	100%
	VELOCITY	100%	100%	100%	100%	100%	100%	100%	100%	100%	100%	100%	100%	100%	100%	100%	100%	100%
	QUANTITY	100%	100%	100%	100%	100%	100%	100%	100%	100%	100%	100%	100%	100%	100%	100%	100%	100%
	RAIN	100%	100%	100%	100%	100%	100%	100%	100%	100%	100%	100%	100%	100%	100%	100%	100%	100%
BETHLEHEM	DEPTH	100%	100%	100%	100%	100%	100%	100%	100%	100%	100%	100%	100%	100%	100%	100%	100%	100%
	VELOCITY	100%	100%	100%	100%	100%	100%	100%	100%	100%	100%	100%	100%	100%	100%	100%	100%	100%
	QUANTITY	100%	100%	100%	100%	100%	100%	100%	100%	100%	100%	100%	100%	100%	100%	100%	100%	100%
	RAIN	100%	100%	100%	100%	100%	100%	100%	100%	100%	100%	100%	100%	100%	100%	100%	100%	100%
BETHLEHEM COUNTY OF PA NEAR CHESTER, PA	DEPTH	100%	100%	100%	100%	100%	100%	100%	100%	100%	100%	100%	100%	100%	100%	100%	100%	100%
	VELOCITY	100%	100%	100%	100%	100%	100%	100%	100%	100%	100%	100%	100%	100%	100%	100%	100%	100%
	QUANTITY	100%	100%	100%	100%	100%	100%	100%	100%	100%	100%	100%	100%	100%	100%	100%	100%	100%
	RAIN	100%	100%	100%	100%	100%	100%	100%	100%	100%	100%	100%	100%	100%	100%	100%	100%	100%
DEPTH	100%	100%	100%	100%	100%	100%	100%	100%	100%	100%	100%	100%	100%	100%	100%	100%	100%	100%

- **Vault Export Upgrades –**

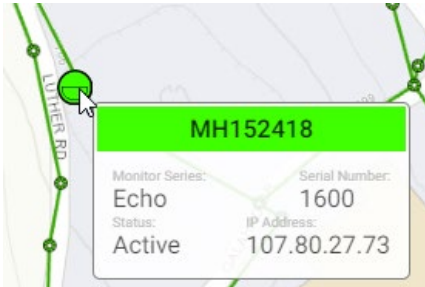
- PRISM Vault will now allow you an easier way to export data for inactive locations. With a simple flip of a toggle the inactive locations will now be included in your location list.
- PRISM Vault now enables you to turn the rounding of data on/off during data export. By turning this option on, data will be rounded (based on units) as the data is displayed in PRISM. Otherwise it will export the actual data in PRISM.

- **Hydrograph Data Editing Updates –**

- PRISM will now remember the points you select on the hydrograph during editing, enabling you to perform multiple actions on the same points.
- PRISM now has a *clear selection* button. This will clear the selection of the points on the hydrograph
- You can now manually update the dates and times for data manipulation, (everything was previously only done through selection on the graph itself). This effects *Manual Edit & Copy\Paste*.
- **Copy\Paste** – Now has an option to perform manual update along with the paste, allowing you to perform basic options (add/subtract/multiply/divide) to the points after pasting.
- **Manual Edit** – Selection on the hydrograph is now based on the points in the box instead of the span of time.
- Edits performed on archived data will now store and be shown in PRISM Production. We are working through some issues with this on the dev environment, but it does work in prod.

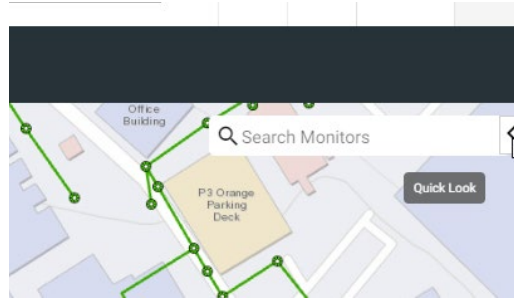
- **GIS Improvements –**

- **Info on Hover** – You can now see monitor information by hovering over symbols on the map!

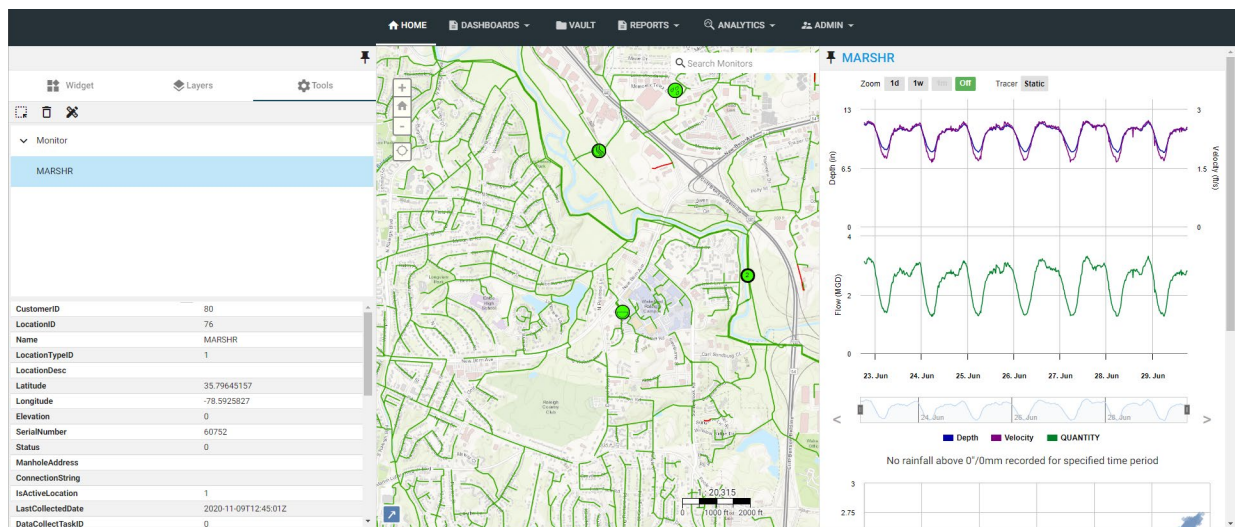


- **Performance** – Development staff is always working on improving performance across PRISM, but we did focus some dedicated time on this release specifically on GIS performance.
- **Symbology** – PRISM symbology is now outlined in black to try to help visibility.

- **Quick Look** – PRISM *Quick Look* is here! You can now view 7 days of data from the GIS. You can get to quick look by opening the right-side pane and clicking on the new fly-out that is next to the *Search Monitors* box.



Once the pane is open, you can see the data by selecting the location on the map. You can keep this pane open by clicking on the Pin on this pane. If you have multiple locations selected, the data will update based on the selected monitor in the *Tools* tree.



- A couple of other great features that are new in this release...
 - Admin Reset Password – Admin users can now reset a user’s password while editing that user. This new link can be found at the top right of the *user editor*.
 - OWASP Top 10 – We have run through the OWASP Top 10 again. We have no High or Medium risks in PROD! Please contact [Lee Keel](#) if you require a copy of this verification report.
 - Auto-Correct – We will be turning auto-correct on for internal projects in the coming weeks.

So, what’s next?

The development team will be working on some new scattergraph curve options, scattergraphs for custom dashboards, and updates to the *Quick Help*. The PRISM team always welcomes comments, suggestions, requests, and bug notifications. We also love hearing about your experience with PRISM, (good or bad), We will use your input to energize the team and identify opportunities for further improvements in the next sprint. Do you have an idea that would make tasks easier, faster, or more enjoyable in PRISM? Let us know!

If you have any questions about PRISM, contact [Lee Keel](#) of the Product Management Team or the ADS [Support Center](#). You can also continue to submit bug reports and feature requests through the self-reporting tool in PRISM.