



WELCOME TO PRISM 3.0



February 26, 2021

Welcome to PRISM 3.0!

<https://www.adsprism.com/>

It's a new day and that brings ADS a brand new version of the PRISM! We are proud to present **PRISM 3.0**. This release reflects a major turning point in the PRISM platform. There are many new and big features to introduce so grab a cup of coffee, get comfortable, and let's get started.



Over 70 User Stories completed delivering new and exciting features!

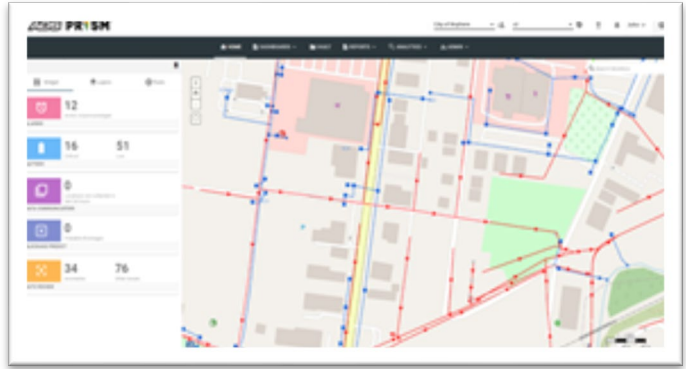
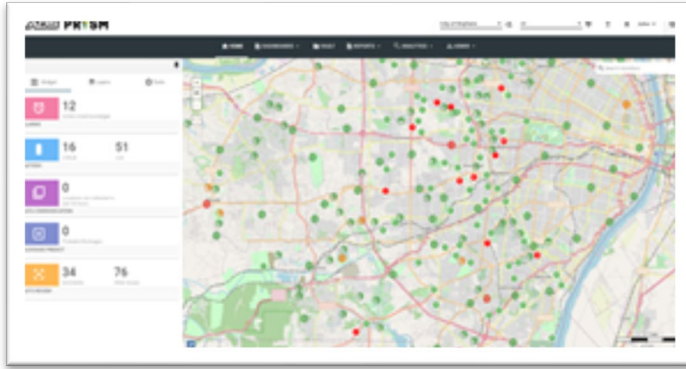


43 Production bugs squashed out of existence!

Check out some of the new features and enhancements below.

New Features:

- **GIS Integration** – The first big update to PRISM greets you right when you log in. This new home page allows you to open the map in full screen or view the notification tiles and widgets on the left side of the screen. Gone are the days of static maps with only static KML layers! With this new feature, we can now display GIS data directly from the clients' GIS Servers. PRISM can consume the GIS data from ESRI ArcGIS Server or GeoServer.



Additionally, PRISM has introduced new symbology for a more intuitive and logical viewing experience for our device locations. These new symbols maintain our long-running use of colors for device status (green, yellow, red).



- Flow Monitor



- Level Monitor



- Rain Gauge

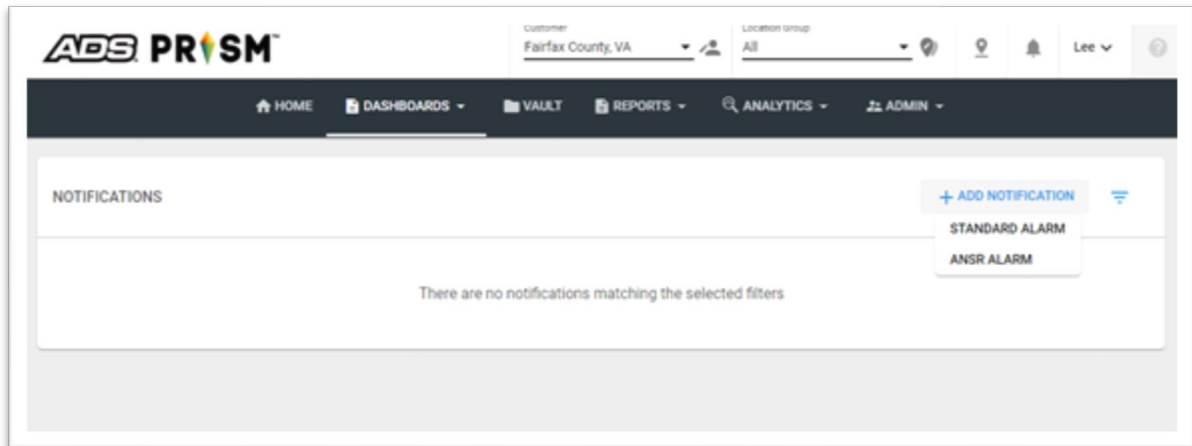


- 3rd Party Monitors

Feel Free to contact Lee Keel or Customer Support for more details on how to get the full GIS integration up and running for you and your customers.

- **Notification Dashboard** – We have introduced a customer favorite request, a brand new way of sending out Alarm Notifications.

You now can create two different types of notifications: **Standard** and **ANSR™**. The **Standard Alarm** provides for notifications of the same alarms that we always have had (e.g. High, High High, Overflow, WDO, etc.). The new **ANSR Alarm** allows you to use an ANSR formula to determine if an alarm notification should be sent to the alarm subscribers. You can use something like this to help prevent false alarms using alarm confirmations. For example, a CSO structure may have a flow meter on an incoming line that is indicating a High-Level flow indication set at the height of the overflow weir structure. However, a depth monitor at the overflow does not indicate any depth of flow over the weir structure. Using ANSR Alarming allows for the High-Level alarm to register in the system log, but not send out any notifications since the weir monitor indicated no measurable flow. This prevents any false notifications of a CSO overflow when there is no overflow. These data then could be used for maintenance notifications for the incoming meter to ensure the depth is measured correctly. The ANSR Alarm is a big step in the direction of having smart CSO alarming capabilities with If-Then decision functionality.



Additionally, we have added a robust **Alarm Notification Dashboard**. This new notification escalation dashboard allows for true alarm escalation by defining notification levels and delay settings. These levels can be based on User Groups, Locations Groups, Individual Users, etc. The escalation is based on primary, secondary, and subsequent notification groups, with each group set by the Customer Administrator with notification delays set by a duration of a time delay when an alarm is not acknowledged by a preceding notification group member.

- **Location Status** – PRISM will now support new status conditions for monitors.
 - **Active** – This is the same as today where the device will record data and report alarms as normal
 - **Maintenance** – Users will give a user-defined period of time that the device will be in a state of maintenance where the support crew may want to move the device, changes installation information, etc. While in this state, the device will still record data BUT alarms notifications will not be sent. The support crew can then reset the device to “Active” or, should the crew forget to do this, the device will return to “Active” after completion of the user-defined maintenance period duration.
 - **Inactive** – In this state the device will record data but PRISM will not load that data into PRISM. This also includes no alarms being sent. NOTE: The device is still active here. There is no way to send deactivate command to the monitor from PRISM
- **Configure Notifications for user** – Users can now designate how they receive notifications by turning the toggle on for each communication channel from which they want to receive notifications. This is done using user preferences.

USER PREFERENCES

User Details

First Name * **Lee** Last Name * **Keel**

Primary Email * **dkeel@idexcorp.com** Notifications

Secondary Email **Secondary Email** Notifications

Phone Number **2564684407** Notifications

User Settings

[CLOSE](#) [APPLY](#)

- **Customer Admins\Admins Edit User's Info** - Customer Admin\Admins now can also help users by updating the user's preferences for them. They can do this by editing that user in the Admin->Users

EDIT USER : DKEEL@IDEXCORP.COM Active/Inactive

USER DETAILS | ASSIGN ROLE | ASSIGN CUSTOMER | ASSIGN LOCATION | ASSIGN FEATURES

First Name * **Lee** Last Name * **Keel**

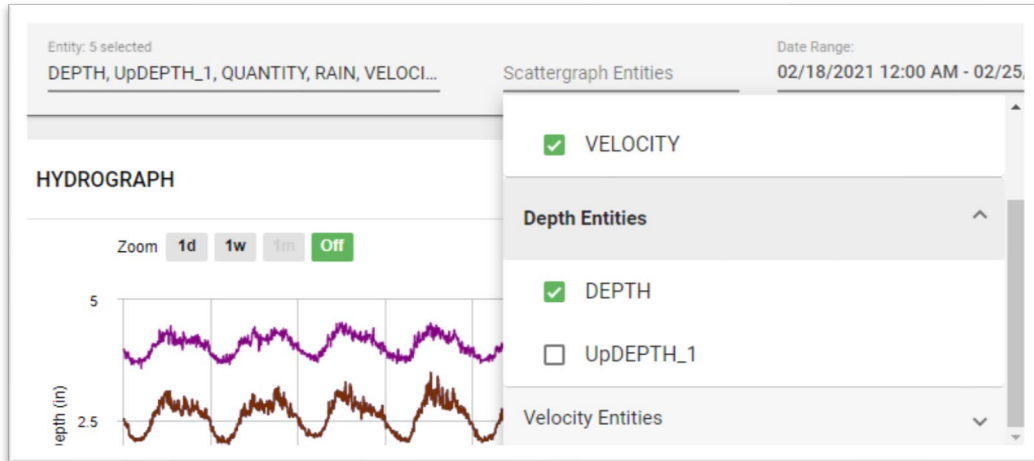
Email * **dkeel@idexcorp.com** Notifications Secondary Email ID **Secondary Email ID** Notifications

User Name **dkeel@idexcorp.com** Phone Number **2564684407** Notifications

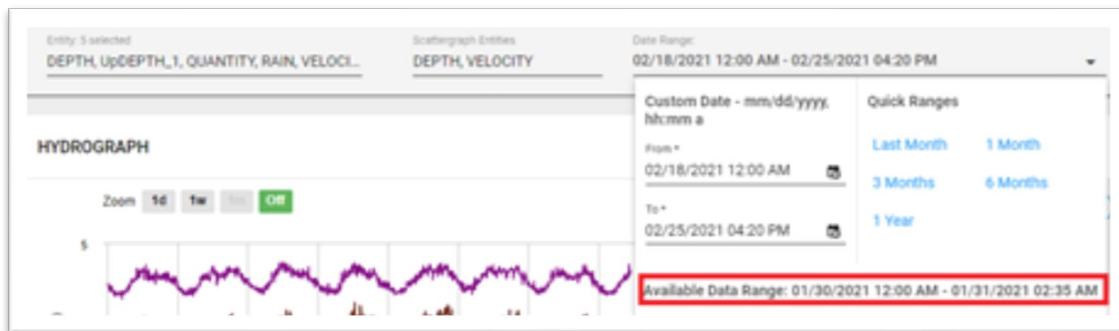
Use Corporate AD

[SAVE](#)

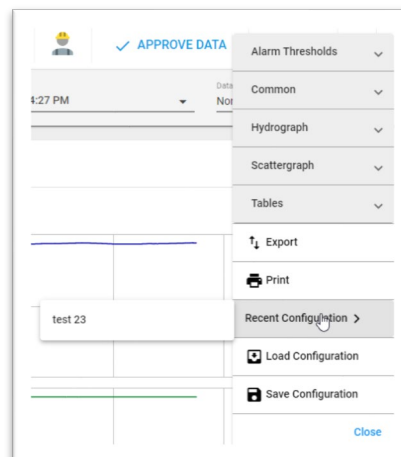
- **Plot Other Entities on Scattergraph** – Users now have the ability to select a subset of the DEPTH & VELOCITY entities for the hydrograph to be plotted on the scattergraph.



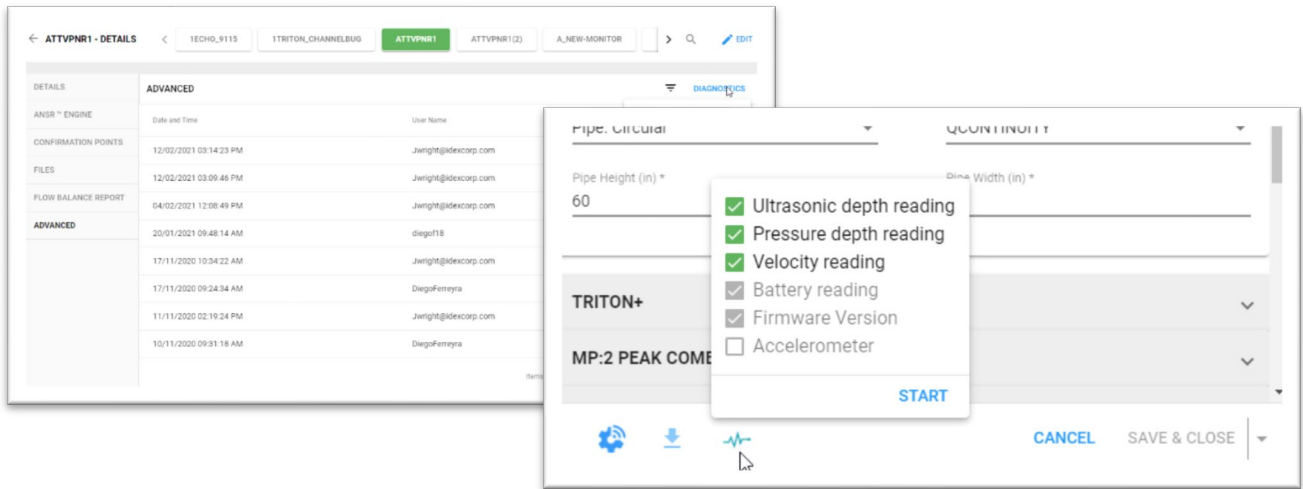
- **Data Availability** – Users can now see the date and time range of data available from the monitor on the location dashboard. This helps to prevent trying to load data that is not available for viewing.



- **Dashboard Configurations** – PRISM now includes a very popular user request - Users can now Save & Load configurations for the location dashboard. These configurations can be saved as private or public settings for others to view. These configurations will store the entities selected, location group that is selected, annotations that are on and much more.

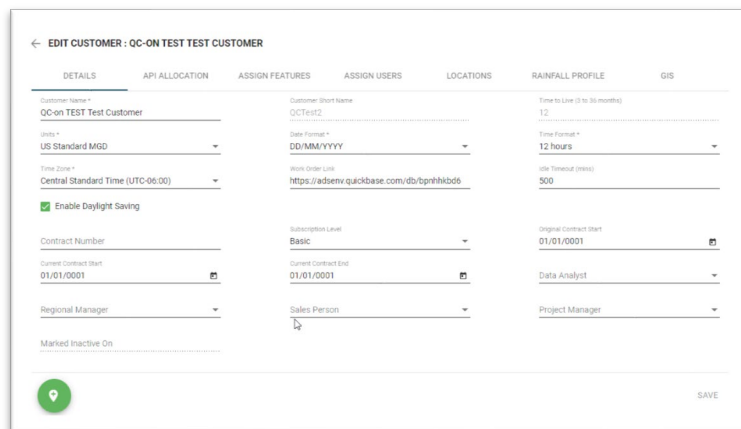


- **View Raw Data** – This option will restrict/allow users to view or not view raw data. If User Administrators have this feature turned “on” then the project users can see the raw entities from the monitor. They can view all entity data. If this feature is turned “off”, the user can only view APPROVED data. They can view only DFINAL, VFINAL, QFINAL, and a few other entities.
- **Monitor Diagnostics** – Users now have the ability to fire monitor diagnostics from the location details page or from the site location card. The history of the diagnostics can be seen on the Advanced tab on the location details page.



- **Project Details** – An important new feature addition in PRISM is the Project Details card. PRISM now allows users to enter specific project details that will help us moving forward for deeper project understanding and management. With this information, ADS will be able to start using some automated project management features in the future such as automated notifications of an upcoming PRISM renewal need, SIM card renewal need, and other project administration functions. These new fields will allow us to communicate directly with users specific for a project as noted.

These automated project administration features are not yet available, but we plan to implement them in 2021. We request that each ADS Project Manager fill out these new fields for each project in the customer editor.



- **Rolling vs Static Data Viewing** – Users can now set the Static & Rolling functions on the Custom Dashboard. If set to “Rolling” then each time you open the dashboard it will “roll” the dates to match up based on the current date. For example: If user selects Last Month and they open the dashboard in February the graph will show data from January. If they open the dashboard in March, the graph will show data from February. If set to “Static”, the Custom Dashboard will open to the date period last used, regardless of when the Customer Dashboard is opened. This will be useful when a user is interested in comparing current data to a fixed period of time in their data history.

ADD GRAPH

Graph Type

Hydrograph

Graph Name *

Date Range:
02/18/2021 00:00 - 02/25/2021 16:58

Static Rolling

Custom date - MM/DD/YYYY

From: 02/18/2021, 00:00

To: 02/25/2021, 16:58

Quick ranges

1 Day 1 Week

Last Month 1 Month

3 Months 6 Months

1 Year

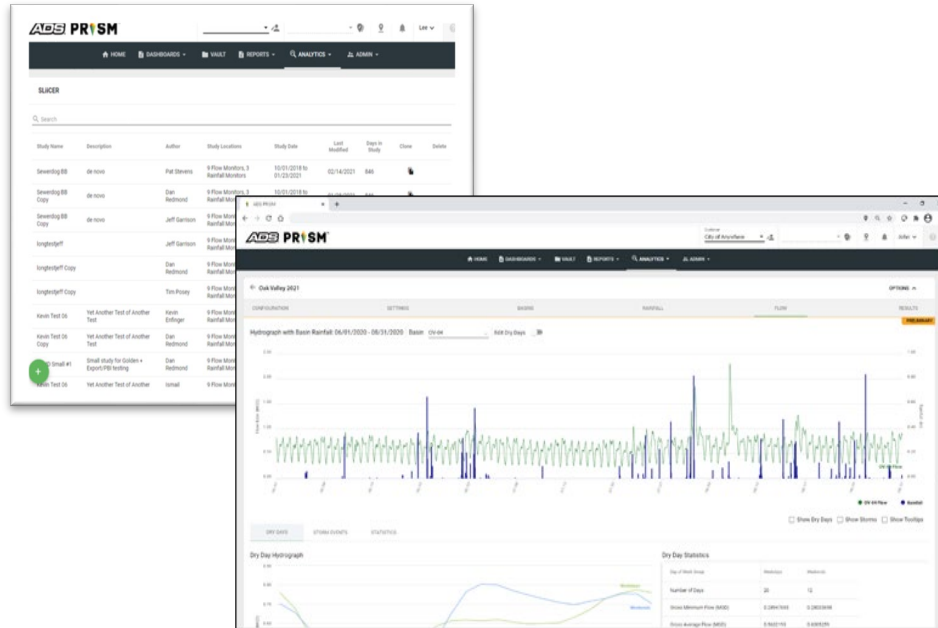
or

ADD MORE

Data Averaging
None

* Entity and Entity color must be selected before saving CANCEL SAVE

- **PRISM SLiICER™ - THE WAIT IS OVER!!!!** SLiICER is released to external BETA users as part of PRISM 3.0. There will be a limited number of customers working on this BETA but we do expect great feedback from these testers. We do expect some updates to continue in the coming weeks and we will release this for all customers upon completion of the BETA.



- A couple of other features that we completed that of great importance.
 - Customers can use their own Active Directory for their PRISM logins
 - Added RTN Time to Alarm report along with a download button to download this report
 - Users can now lock the curve on the scattergraph for the data that has been drawn. While the curve is locked, the curve will remain on the scattergraph no matter the data being displayed
 - Users can now **Recalculate** dependency entities from the location dashboard
 - User can now set a specific time for schedule collect

So, what's next?

The development team will be taking the next few months to clean up some outstanding bugs and tech debt. We plan to have a few new features in this period, but we will be focused primarily on improving the performance, stability, and user experience in PRISM.

The PRISM team always welcomes comments, suggestions, requests, and bug notification. We also love hearing about your experience with PRISM – good and ugly – and use that input to energize the team or identify opportunity in the next sprint. Do you have an idea that would make your or another user's tasks easier or faster in PRISM? Let us know!

If you have any questions about PRISM, please contact [Lee Keel](#) of the Product Management Team or the [Support Center](#). Please continue to submit bug reports and feature requests through the self-reporting tool in PRISM.