



FLOWVIEW PRISM UPDATE



November 30, 2018

So many cool new features; so little time!

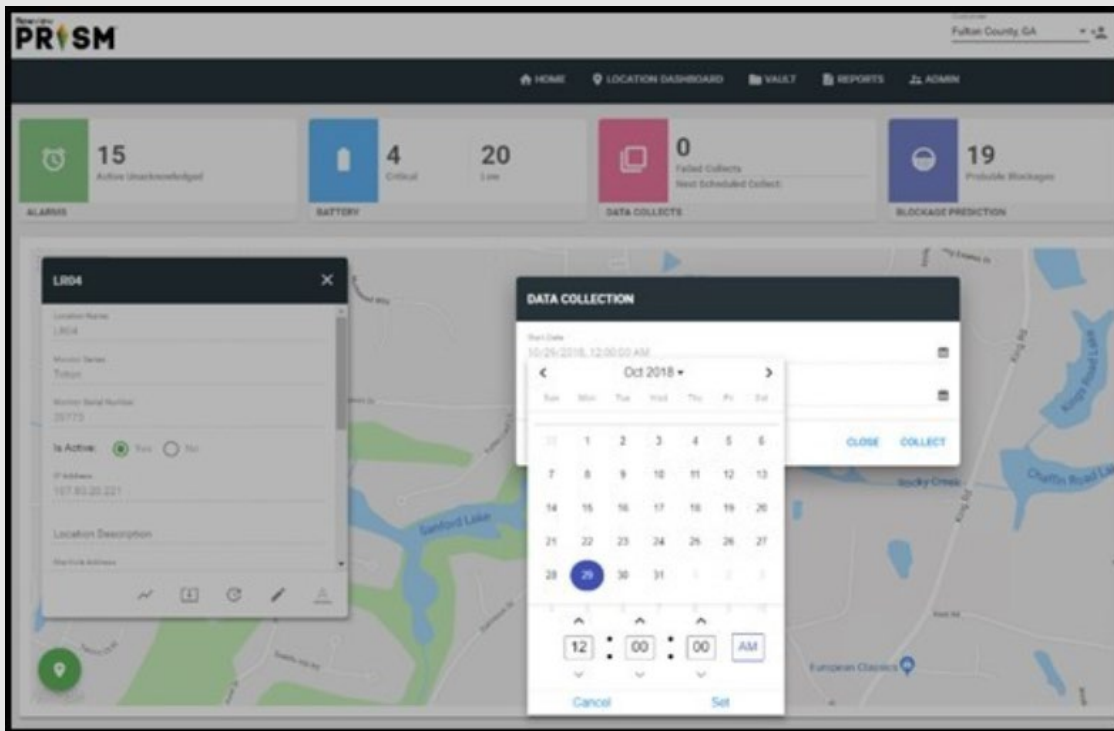
ADS® is excited to announce the latest release of updates to **FlowView PRISM™ 1.1!** Check them out here:

www.adsprism.com

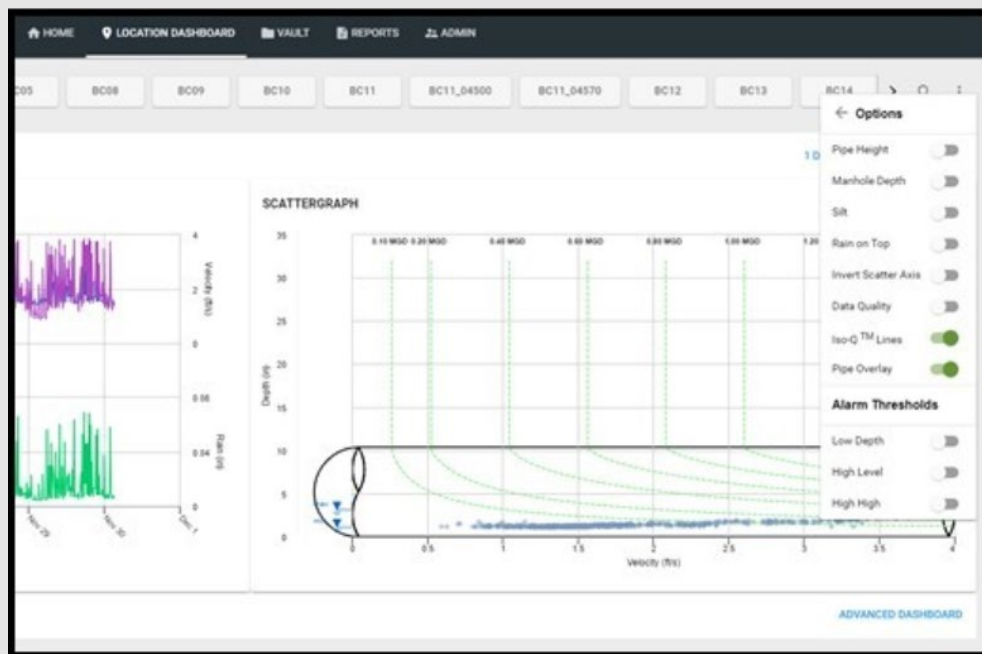
What's new in this update of FlowView PRISM 1.1:

Check Out the New Favicon! – How can something so small be so important? Well, the people love their favorite icons – favicons – and so do we! The PRISM favicon now is the PRISM logo. You will notice this immediately in your browser tabs, “Favorites” list, and other areas where you have your PRISM links saved. This one small change helps to drive our brand recognition in the marketplace (and it is cool too!).

Even More User Control With Time Based, On-Demand Data Collection – Sometimes, you may want to back-collect data from a specific time series to fill gaps or update information. You now can do this via the “Data Collection” button on the Home Screen. The date and time range are user selectable, giving you the ultimate control for updating just the right amount of data. See below for a screenshot of this new function.



Iso-Q™ Lines! – We heard you loud and clear, and **Iso-Q** lines as well as **the pipe overlay** are back as standard features in PRISM! Both of these are included as options for the scattergraph display on both the Location Dashboard and the Advanced Dashboard (more on the Advanced Dashboard below). To enable Iso-Q lines and the Pipe Overlay, open your Settings panel in the upper right corner of the Location Dashboard (three vertical dots), select Options, and click on the applicable slider to turn on the features. These are persistent as you change locations on the Dashboard. These great tools help “tell the story” of what is happening in the pipeline!



Debuting the Advanced Dashboard – The Advanced Dashboard (formerly the Advanced Hydrograph) reunites the scattergraph with the hydrograph on one page with all the features of the advanced viewing options. The Advanced Dashboard allows you to view a variety of entities in the hydrograph, and view the corresponding depth, velocity, and Iso-Q lines on the scattergraph, all on the same screen. Want to view just one graph in more detail? Both the hydrograph and scattergraph are expandable to full screen viewing using the expansion icon in the top right corner of each graph.

Multi-Location Hydrograph Viewing is Back! – “It takes a village” of flow monitoring sites to reveal their flow secrets, and the new multi-location feature on the Dynamic Dashboard brings back a long-time favorite advanced viewing tool! No longer do you have to flip back and forth between individual hydrographs. Users now can plot multiple entities from multiple locations **on the same hydrograph!** Yes! Upstream and downstream location comparisons can be made on the fly, on the same screen, in the same hydrograph. So nice! Try it out! An example is show below.



There are more updates in the works and more leaps to come; stay tuned!

Most recent bug fixes:

- Quite a few bugs were squashed this sprint. We still are working on a few, and plan to notify you next week when these are completely eradicated!

So what's next?

Work on FlowView PRISM continues, and the team welcomes any and all comments, suggestions, and requests. We currently are moving forward with the development of FlowView PRISM to provide our customers with tools to do even more. Look for more updates coming soon as our team continues to provide rapid leaps in FlowView PRISM capabilities!

If you have any questions about FlowView PRISM, please contact [Candi Cole](#), [Lee Keel](#), or [Jordan Box](#) of the PRISM Development Team. Please continue to submit bug reports and feature requests through the self-reporting tool in FlowView PRISM.