

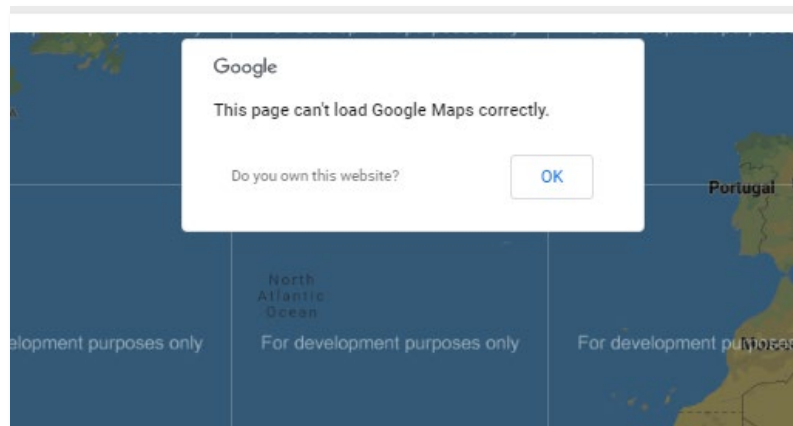


FLOWVIEW PRISM 1.1.1 UPDATE



January 4, 2019

FlowView PRISM currently is experiencing an issue with the Google Maps API. After a user logs in to the system, they will see the following message:



This issue **does not** affect the functionality of PRISM. All data continues to be collected, and all other features are fully functional. You even can still drill down to sites via the map, browse the map, etc. It only is an issue with the way the map is displayed.

The PRISM development team is aware of this issue, and they are actively working with Google to resolve it. We will issue an update when the problem is resolved. We appreciate your patience.

Project Managers and Data Managers, please feel free to communicate this out to your clients that already are using PRISM. At this time, we will not be sending a full “email blast” to external email addresses.

If you have any questions about this issue, please contact the Support Center. If you find other issues, please continue to submit bug reports and feature requests through the self-reporting tool in FlowView PRISM.